



EROAD

AUSTRALIAN  
RALLY  
CHAMPIONSHIP

B U C K B Y M O T O R S

R A L L Y

## TASMANIA

7-9 NOVEMBER 2025



7-9 November 2025

Burnie, Tasmania

Round 6

EROAD Australian Rally  
Championship[rally.com.au/tasmania](http://rally.com.au/tasmania)

## Officials Briefing



CHAMPIONSHIP SPONSORS



## 1 Introduction

Welcome to the 2025 Buckby Motors Rally Tasmania bringing together competitors from the EROAD Motorsport Australia Rally Championship and the Motorsport Australia Tasmanian Rally Championship as the final round of the Championship.

If you have an **Emergency** on event, please call the Rally Command Centre on **0423 713 796**.

If this is a medical emergency call **000** first.

Thank you for your time in helping us run this event.

If you cannot make it on the day please contact **Nathan Whittle** on **0491 293 314** as soon as you know you cannot attend.

## 2 Briefing

- (a) Thank all for attending.
- (b) Senior Officials for the weekend are

Clerk of the Course	Matt von Bertouch	0408 003 212
Deputy Clerk of the Course	Hamish Marquis	0419 349 656
Assistant Clerk of the Course - Sporting	Nathan Newton	0418 599 791
Event Manager and Event Secretary	Adrian Coppin	0415 508 244
Commercial and Public Events Manager	Jill Coppin	0419 570 535

- (c) Remember **Motor Racing is DANGEROUS** – The *Rules* and instructions must be strictly adhered to. *Motorsport Australia* OH&S Policy is to be observed.
- (d) Persons under 18 years must have parental / guardian permission (signed form) to officiate.
- (e) No person under 18 years is to officiate unsupervised.
- (f) **Motorsport Australia Disclaimer.**
  - (i) Ensure all Officials have read it or read to them and signed on as having done so.
  - (ii) If a person has registered as an Official for the rally on line then they do not have to sign the Motorsport Australia Disclaimer, as it was part of the event registration.
- (g) Fill out incident sheet for anything unusual.
- (h) All officials must position themselves as instructed by their Stage Commander or Senior Officials and they intend to remain for the running of the stage or competition.
- (i) In the *Event* of a delay in the running schedule or an extended unexplained gap in the field, do NOT leave your position until directed to do so by the Clerk of the Course or their representative.
- (j) Each control will have an official document pack with instructions, these instructions must be read and if there are any questions ask your Stage Commander or Senior Officials
- (k) Official's vests must be worn at all times.
- (l) Do not go onto the road to assist competitors unless urgent assistance is required. (i.e. Medical or Fire)
- (m) Assist by having equipment ready for pickup by Stage Commander or Sweep or his representative.
- (n) Emphasise no official or associates are to leave their designated position unless instructed to by the Clerk of the Course or his delegate. The Stage Commander or his representative will inform you of when you can leave.
- (o) Thank you and thank you again for attending and have a great day, see you at the finish after the *Event*.

### 3 Sportity APP

The EROAD Motorsport Australia Rally Championship is using the SPORTITY App as the Official Notice Board for the Rally to communicate with both Teams and Officials.

A lot of relevant information will be held on SPORTITY. This App is available on both Apple and Android.

Down load the App, via QR codes below and enter the password - **ARC**. This will give you access to all ARC rallies this year, open the Rd 6 Rally Tasmania folder, and access the information available.

Results will also be available in this platform.

**NOTE:** This document is included under the “TAS, Officials” folder in SPORTITY. URL links will work direct from the PDF document in Sportity, just double tap.

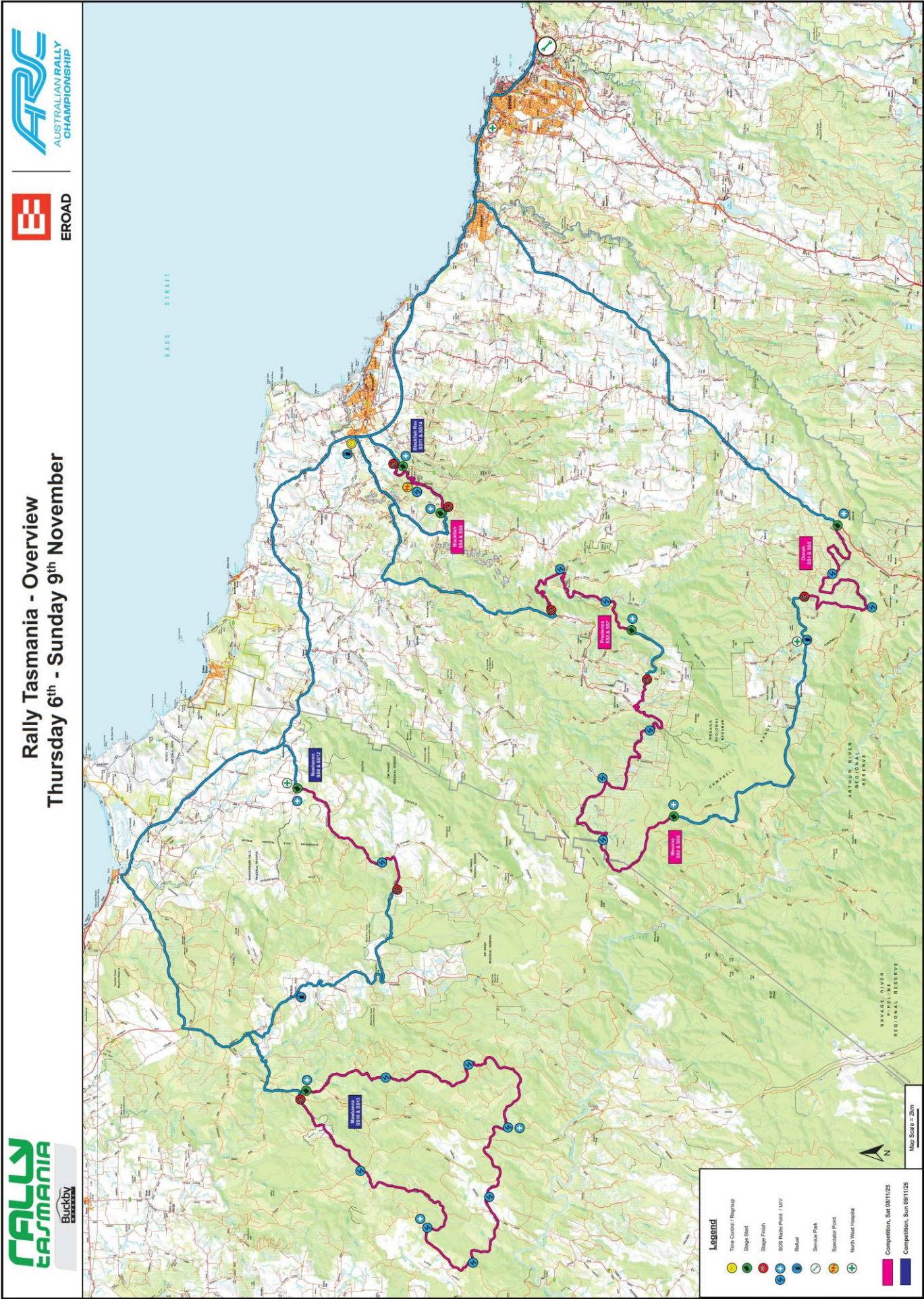


## 4 Burnie Overview Map





# 5 Event Overview Map





## 6 Officials Meet Points

### Stage Teams

The use of the RallySafe timing for the event will mean we do not require officials at the Flying Finish of stages. Time Controls, Start Lines and Stop Points will have officials as required.

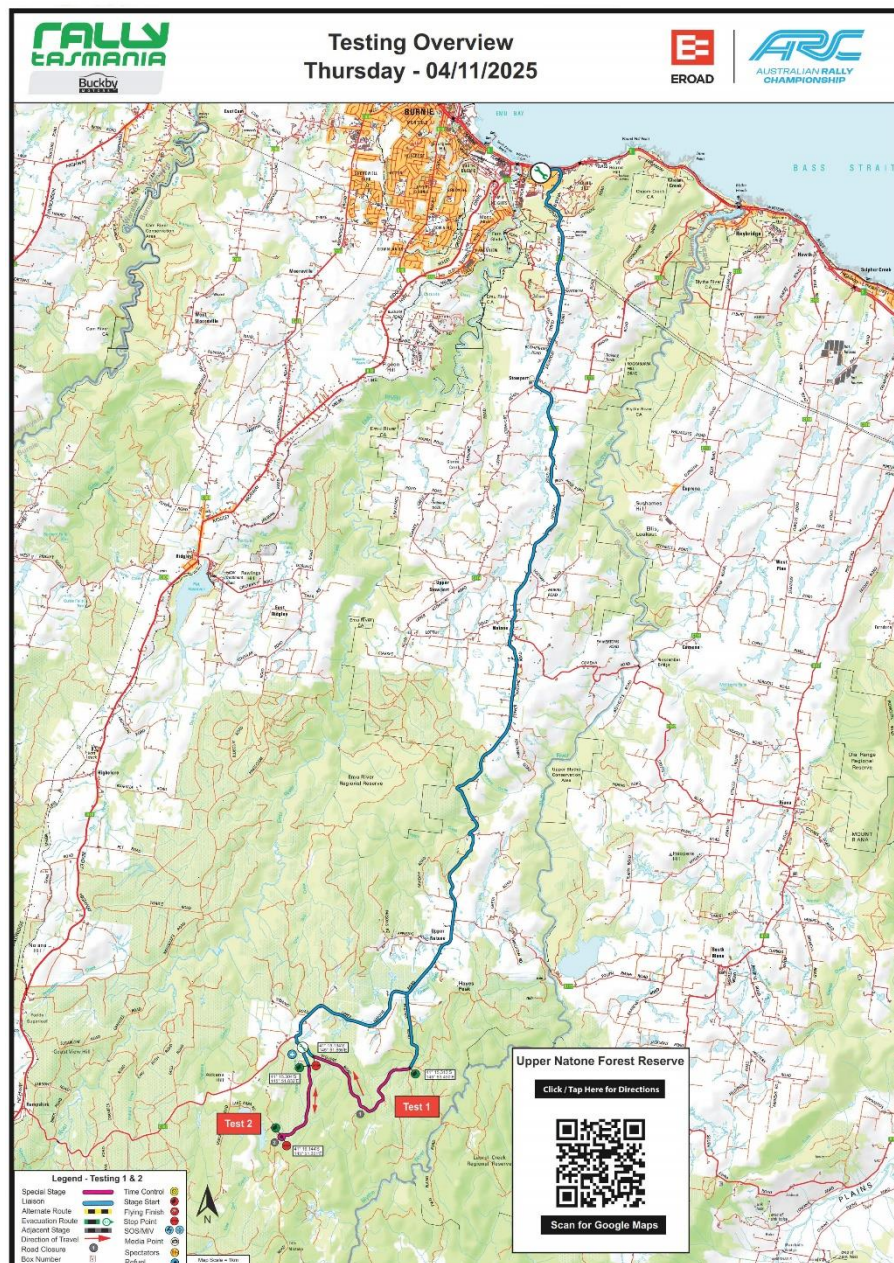
Manned Road Closures will have the minimum number of people, on a case-by-case basis, to maintain safety and ensure there is no unauthorised access to the rally route.

### Stage Team meet points are

Tap/Click on the link below or scan the QR Code to access these points on Google Maps

### 6.1 Thursday Testing

- Testing Stages Stage Commander Nathan Newton 0418 599 791
  - 06:30am meeting time
  - Recce at 7:15am, First car 08:00am
  - Upper Natone Forest Reserve, Blythe Rd, Upper Natone TAS 7321
  - GPS - 41° 15.131'S, 145° 51.749'E
  - Google Map Pin - <https://maps.app.goo.gl/ZrsGjNiXsvcyQWXf9>



## 6.2 Saturday

- Oonah, Stage Commander Steph Peters - 0418 130 691
  - 6:45am meet time, Leaving at 7:00am
  - Yolla Taven

<https://maps.app.goo.gl/Zu5zdmofyKBdgZRM8>  
Yolla Tavern, 1610 Murchison Hwy, Yolla TAS 7325



- Meunna Stage Commander Stephen Mott - 0428 276 667
  - 6:45am meet time, Leaving at 7:00am
  - Muddy Boots Café/ Sisters Creek Hall

<https://maps.app.goo.gl/X8QbSDw9d3YLAoDz5>  
17894 Bass Hwy, Sisters Creek TAS 7325



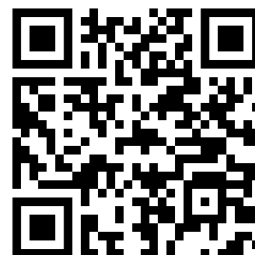
- Preolenna Stage Commander Lee Marshall 0407 301 511
  - 7:30am meet time, Leave at 7:45am
  - Haywards Car Park

<https://maps.app.goo.gl/et5MJ5D81eiNiEGbA>  
Cnr of the Bass Hwy and Calder Rd, Wynyard



- Blackfish Stage Commander Stuart Styles – 0400 573 655
  - 8:30am meet time, Leave at 8:45am
  - Doctors Rock Car Park

<https://maps.app.goo.gl/YNkAtGZRkYnYbQXRA>  
Cnr of the Bass Hwy and the Old Bass Hwy, Doctors Rock



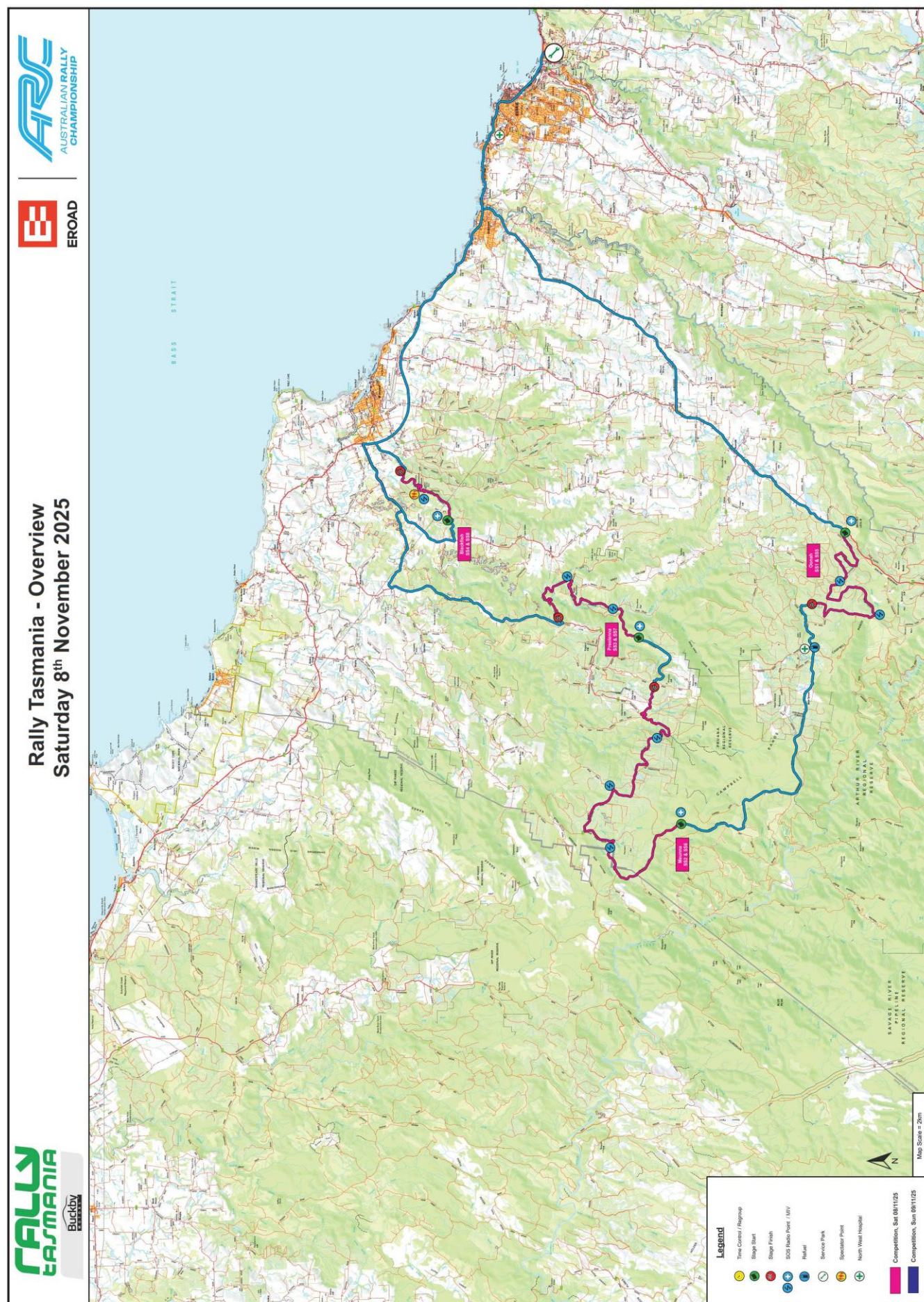
- Oldina Spectator Point Chief Spectator, Kelly Hunt – 0428 861 710
  - 9:00am meet time
  - Oldina Forest Reserve

<https://maps.app.goo.gl/zan4iSTifoVGKa3Z9>





### Saturday Map



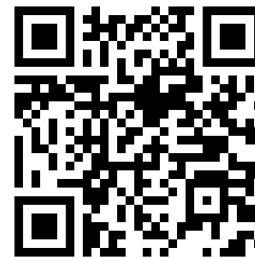


### 6.3 Sunday

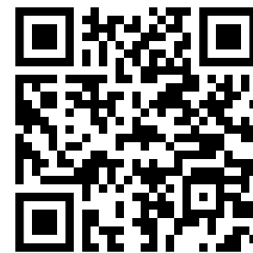
- Newhaven Stage Commander Lee Marshall 0407 301 511
  - 5:45am meet time, Leaving at 6:00am
  - Muddy Boots Cafe
  - <https://maps.app.goo.gl/X8QbSDw9d3YLAoDz5>
  - 17894 Bass Hwy, Sisters Creek TAS 7325



- Mawbanna Stage Commanders, Steph Peters - 0418 130 691
  - 06:00am meeting time, leaving at 6:15am
  - Rocky Cape Taven
  - <https://maps.app.goo.gl/vFwf627mUbfZCriu5>
  - 19375 Bass Hwy, Rocky Cape TAS 7321



- Blackfish Rev Stage Commander Stuart Styles – 0400 573 655
  - 8:00am meet time, Leave at 8:15am
  - Doctors Rock Car Park
  - <https://maps.app.goo.gl/YNkAtGZRkYnYbQXRA>
  - Cnr of the Bass Hwy and the Old Bass Hwy, Doctors Rock

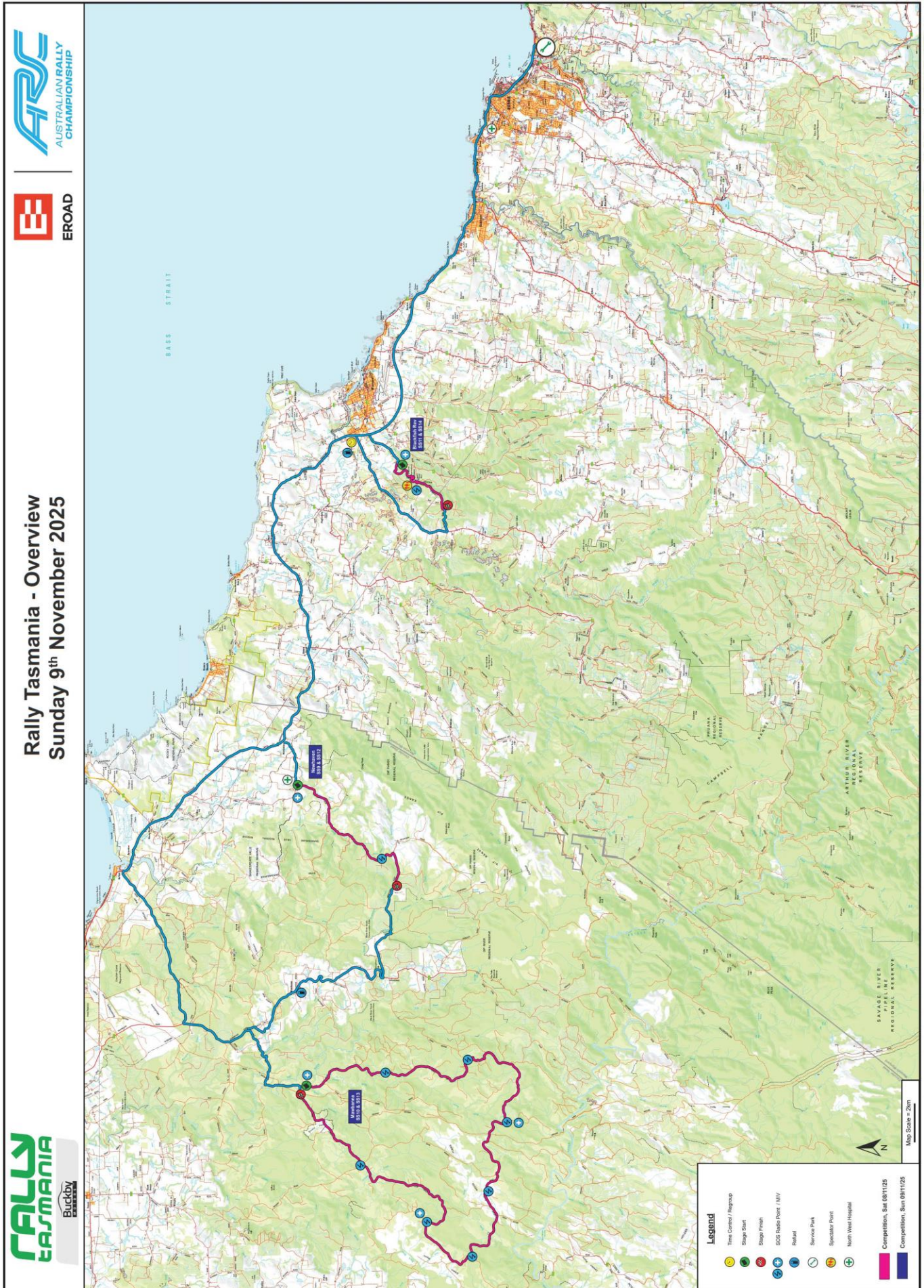


- Oldina Spectator Point Chief Spectator, Kelly Hunt – 0428 861 710
  - 8:30am meet time
  - Oldina Forest Reserve
  - <https://maps.app.goo.gl/zan4jSTifoVGKa3Z9>





**Sunday Map**





## 7 Entry List, as at 26/10/2025



### Australian Rally Championship




#### Entry List






Car No.	Competitor / Sponsor	Driver / Co-Driver	State	Year - Manufacture Car - Class	ARC Elig. State Elig.
<b>EROAD Australian Rally Championship</b>					
1	Toyota Gazoo Racing Australia	Harry Bates Coral Taylor	ACT NSW	2024 Toyota GR Yaris - Rally 2	ARC
2	Paddon Racing Group	Hayden Paddon John Kennard	NZ NZ	2022 Hyundai i20N - Rally 2	ARC
3	Pedders Suspension and Brakes	Scott Pedder Glenn Macneall	VIC WA	2025 Skoda Fabia RS - Rally 2	ARC
4	Toyota Gazoo Racing Australia	Lewis Bates Anthony Mcloughlin	ACT QLD	2024 Toyota GR Yaris - Rally 2	ARC
5	IntelliSpatial Fleetcare Racing	Alex Rullo Steve Glenney	WA TAS	2022 Hyundai i20N - Rally 2	ARC
6	Maximum Motorsport	Emma Gilmour Ben Searcy	NZ WA	2017 Skoda Fabia - R5	ARC
7	Shamrock Motorsport	Richie Dalton Mac Kierans	NSW NSW	2020 Toyota GR Yaris - AP4	ARC
8	Ezi Up Tyre Repair Kit	Troy Dowel Bernie Webb	VIC NSW	2020 Toyota GR Yaris - AP4	ARC
9	IntelliSpatial Fleetcare Racing	Peter Rullo Kelly Thomas	WA WA	2018 Skoda Fabia - R5	ARC
10	Les Walkden Rallying, SOS Labour Solutions	Bodie Reading Brad Jones	TAS QLD	1999 Subaru Impreza WRX - P6	ARC, Production Cup TRC
11	Peterson Motorsport	Aidan Peterson Mitchell Newton	TAS TAS	2001 Subaru Impreza WRX - P5	ARC, Production Cup TRC
12	SR Automotive	Stewart Reid Bella Haggarty	QLD NZ	2016 Mitsubishi Mirage - AP4	ARC
13	Buckby Motorsport	Ben Newman Adam Kudra	TAS QLD	2007 Subaru WRX STi - P5	ARC, Production Cup TRC
14	Buckby Motorsport	Crichton Lewis Anthony Carr	TAS TAS	2010 Subaru WRX STi - P5	ARC, Production Cup TRC
15	Australian Truck Performance	Tony Sullens Kaylie Newell	NSW NSW	1984 Toyota AE86 Sprinter - CRC	ARC, 2WD Classic Cup
16	Maximum Motorsport	Jackson Long Damien Long	NSW NSW	2023 Subaru Impreza WRX - WRX	ARC, WRX Challenge
17	Kickass 12 Volt Products	Glenn Brinkman Scott Beckwith	QLD WA	2023 Subaru Impreza WRX - WRX	ARC, WRX Challenge
18	Jaidyn Gluskie Motorsport	Jaidyn Gluskie Rhys Llewellyn	TAS NSW	2003 Subaru Impreza RS - P5	ARC, Production Cup, Junior Cup (D) TRC
19	Racing Dipsy	Shane Garner Sylvie Garner	QLD QLD	1994 Subaru Impreza WRX - P5	ARC, Production Cup, 4WD Classic Cup
20	Spalding Dillon Australia	Molly Spalding Matt Dillon	SA SA	1995 Subaru Impreza WRX - C4	ARC, Production Cup, 4WD Classic Cup
21	Victory Ford	Nathan Stokes Ian Wheeler	QLD TAS	2012 Subaru Impreza WRX - P5	ARC, Production Cup
22	Maximum Motorsport	Andy van Kann Catherine Saayman	WA WA	2023 Subaru Impreza WRX - WRX	ARC, WRX Challenge
23	A.R. & T.R. Walsh Towing	Jacob Walsh Adrian Walsh	TAS TAS	1979 Mazda RX7 - CRC	TRC
24	Tim Harris	Tim Harris Duncan Bishop	TAS TAS	2008 Subaru Impreza WRX - CRC	TRC
25	Team Datsun	Mark Kyle Devin Cullis	TAS TAS	1972 Datsun 1600 - Classic C2	TRC



## 8 Itinerary

		ARC Itinerary					
Version 1.0 25/10/2025							
Stage TC / SS	Location	SS km	Liaison km	Total km	Target Time	1st Car Due	Section
Rally Show - All Crews				Friday 07/11/2025 Sunrise 05:56			
	Rally Show	Staging at SP Regroup Area				15:30	
	Burnie Water Front,	Rally Show commences				17:00	
	North Terrace, Burnie	Rally Shows concludes				19:00	
					Sunset 20:04		
Start Leg 1 (Section 1 & 2)				Saturday 08/11/2025 Sunrise 05:55			
	Distance to next refuel	(14.00)	(39.70)	(53.70)			
	Technical Zone					8:20	
0	Start - Wivenhoe					8:30	
1			36.47	36.47	0:40	9:10	
SS1	Oonah 1	14.00				9:13	
RZ	Remote Refuel - Takone Rd		[3.23]	[17.23]			
1	Distance to next refuel	(37.05)	(65.01)	(102.06)			
2			18.88	32.88	0:44	9:57	
SS2	Meunna 1	21.84				10:00	
3			4.18	26.02	0:32	10:32	
SS3	Preolenna 1	10.41				10:35	
4			19.13	29.54	0:39	11:14	
SS4	Blackfish 1	4.80				11:17	
4A	Flexi-Holding IN		26.05	30.85	0:40	11:57	
4B	Flexi- Holding OUT / Service IN	Note: Crews have a maximum of 15 mins to move their car into service from holding area					E
Service A		(51.05)	(104.71)	(155.76)	0:30		
RZ	Service Park Refuel						
2	Distance to next refuel	(14.00)	(39.70)	(53.70)			
4C	Service OUT - Regroup IN					12:42	E
	Regroup						
4D	Regroup OUT					13:22	
5			36.47	36.47	0:40	14:02	
SS5	Oonah 2	14.00				14:05	
RZ	Remote Refuel - Takone Rd		[3.23]	[17.23]			
3	Distance to next refuel	(37.05)	(65.01)	(102.06)			
6			18.88	32.88	0:44	14:49	
SS6	Meunna 2	21.84				14:52	
7			4.18	26.02	0:32	15:24	
SS7	Preolenna 2	10.41				15:27	
8			19.13	29.54	0:39	16:06	
SS8	Blackfish 2	4.80				16:09	
8A	Flexi- Holding IN		26.05	30.85	0:40	16:49	
8B	Flexi- Holding OUT / Service IN	Note: Crews have a maximum of 45 mins to move their car into service from holding area					E
Service B		(51.05)	(104.71)	(155.76)	0:45		
8C	Service OUT /Parc Ferme IN					17:34	E
All cars re-starting in Heat 2 must be returned to Parc Fermé no later than						23:00	
Leg 1 Totals		102.10	209.42	311.52	Sunset 20:05		

 <b>ARC Itinerary</b>  							Section
Stage TC / SS	Location	SS km	Liaison km	Total km	Target Time	1st Car Due	
<b>Start Leg 2 (Sections 3, 4 &amp; 5) Sunday 09/11/2025 Sunrise 05:54</b>							
8D	Parc Ferme OUT / Service IN					<b>7:00</b>	
<b>Service C</b>		<b>(0.00)</b>	<b>(0.00)</b>	<b>(0.00)</b>	<b>0:15</b>		
<b>RZ</b>	Service Park Refuel						
<b>4</b>	Distance to next refuel	(9.39)	(58.10)	(67.49)			
8E	Service OUT					7:15	
9			46.33	46.33	0:50	8:05	
<b>SS9</b>	<b>Newhaven 1</b>	<b>9.39</b>				<b>8:08</b>	
<b>RZ</b>	Remote Refuel - Mawbanna Rd		[11.77]	[21.00]			
<b>5</b>	Distance to next refuel	(43.40)	(59.07)	(102.47)			
10			21.54	30.93	0:35	8:43	
<b>SS10</b>	<b>Mawbanna 1</b>	<b>43.40</b>				<b>8:46</b>	
<b>RZ</b>	Remote Refuel - Haywards		[49.30]	[92.60]			
<b>6</b>	Distance to next refuel	(4.82)	(36.11)	(40.93)			
11			51.98	95.38	1:38	10:24	
<b>SS11</b>	<b>Blackfish Rev 1</b>	<b>4.82</b>				<b>10:27</b>	
11A	Flexi- Holding IN		33.43	38.25	0:39	11:06	
11B	Flexi- Holding OUT / Service IN						<b>E</b>
<b>Service D (57.61) (153.28) (210.89) 0:30</b>							
<b>RZ</b>	Service Park Refuel						
<b>7</b>	Distance to next refuel	(9.39)	(58.10)	(67.49)			
11C	Service OUT / Regroup IN					11:51	<b>E</b>
	Regroup						
11D	Regroup OUT					12:21	
12			46.33	46.33	0:50	13:11	
<b>SS12</b>	<b>Newhaven 2</b>	<b>9.39</b>				<b>13:14</b>	
<b>RZ</b>	Remote Refuel - Mawbanna Rd		[11.77]	[21.00]			
<b>8</b>	Distance to next refuel	(43.40)	(59.07)	(102.47)			
13			21.54	30.93	0:35	13:49	
<b>SS13</b>	<b>Mawbanna 2</b>	<b>43.40</b>				<b>13:52</b>	
<b>RZ</b>	Remote Refuel - Haywards		[49.30]	[92.60]			
<b>9</b>	Distance to next refuel	(4.82)	(36.11)	(40.93)			
13A	Power Stage Regroup IN		49.15	92.55	1:33	15:25	<b>E</b>
	Power Stage Regroup						
13B	Power Stage Regroup OUT					15:55	
14			2.90	2.90	0:08	16:03	
<b>SS14</b>	<b>Blackfish Rev 2 (Power Stage)</b>	<b>4.82</b>				<b>16:06</b>	
14A	End of Event-Parc Ferme IN		33.43	38.25	0:39	16:45	<b>E</b>
	Podium - Wivenhoe					17:30	
<b>Leg 2 Totals</b>		<b>115.22</b>	<b>306.63</b>	<b>421.85</b>	<b>Sunset 20:06</b>		

**Note: Early check-in allowed where "1st Car Due" time shows "E"**

Totals of the Rally	SS	Liaison	Total	%
Leg 1, 8th Nov (Sections 1 & 2)	102.10	209.42	311.52	33%
Leg 2, 9th Nov (Sections 3, 4, & 5)	115.22	306.63	421.85	27%
<b>Totals - 14 SS</b>	<b>217.32</b>	<b>516.05</b>	<b>733.37</b>	<b>30%</b>



## 9 Service Park

The Service Park will be located at the Wivenhoe Recreation Ground, 1-7 Pearl Street, Wivenhoe, Burnie

**Note:** General Parking is in Pearl St. Please do NOT drive into Service Park

Scan the QR Code or tap on the link below for the location on Google Maps

Entry Via Pearl Street, Wivenhoe, Tasmania

<https://maps.app.goo.gl/cScUdh5PhPpX13eD8>

This image is indicative of the proposed layout.





## 10 Rally Show

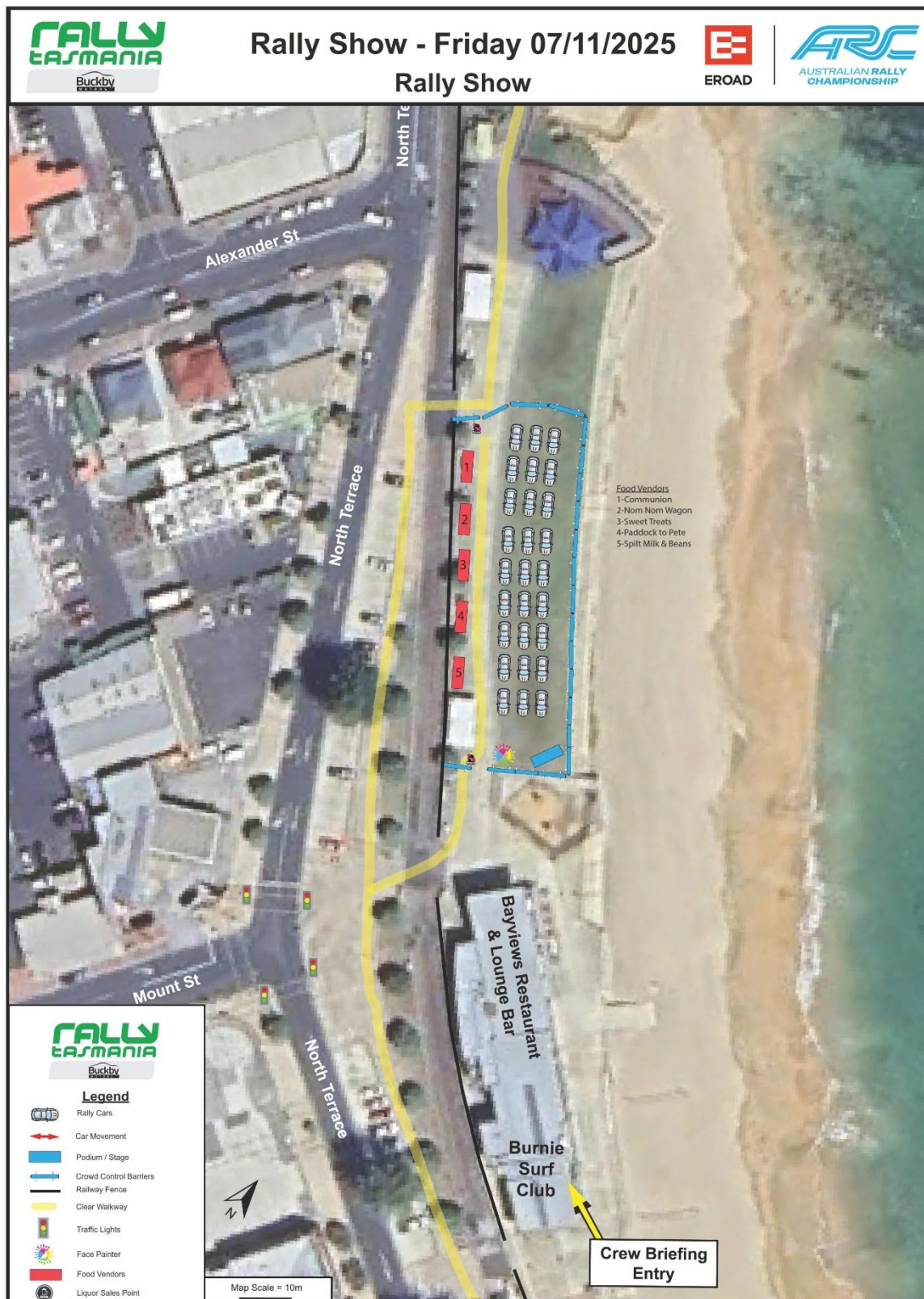
On Friday evening the Rally Show will be held at the Burnie Waterfront.  
Cnr North Terrace & Mount St, Burnie

<https://maps.app.goo.gl/CyUnvg5Nx9T8stCD7>



This will start at 5pm and finish at 7pm. It is a free event and no ticket is required.

This will be a good opportunity to meet some of the crews, get a bite to eat and have a close look at the cars.





## 11 On the Stages – Think about where you are

Please remember the following points when if you are out in the forest

- Please respect all areas we are working in, the environment, fauna, flora and heritage of the land is important to us all, leave as small a foot print as you can.
- Tracks may be marked with flagging tape or other markers; however, steel nails or screws must not be used to attach markers to trees, due to the danger caused to operators when trees are milled. Tracks should not be marked with permanent paint.
- There are several Apiary Sites in the area of the rally. Access to apiary sites must not be altered or impeded. If hives are present, vehicles should not disturb the hives or stop near the site to prevent the chance of bee stings. If this an issue to any Official please advise the Officials Co-Ordinator, **Nathan Whittle** on **0491 293 314** and we can advise if your location is near one of these sites
- Eagles displaying stress, breeding activity or disturbance such as being vocal (screeching), pothooking (aggressive swooping), or flushing from the nest should be reported to Rally Command.
- Bunting will be used at the spectator points to prevent spectators and vehicles from accessing areas beyond the shoulder of existing formed roads
- No trees or other vegetation are to be felled

## 12 Clean Up

Please remember when leaving your location-

- We know that we won't be having any fires in the forest, but if there happens to be some spontaneous combustion in your area remember to please fully extinguish ALL embers and clean up the area.
- Please take any and all rubbish with you. Please leave the area as you found it.

## 13 After the Event

### 13.1 Podium

A Podium presentation will be held on Sunday 9<sup>th</sup> November in the Service Park at approx. 5:00pm

### 13.2 Officials Thankyou and Afterparty

Don't forget about the Official's Thank you at Commun••ion Brewing Co, 57 Wilmont St Burnie on Sunday evening from 7pm - 10pm. Finger food and first drink is on us.

If you haven't already booked tickets, please scan the QR code on the next page or click on the URL below for your free ticket.

[https://www.eventbrite.com.au/e/rally-tasmania-officials-thank-you-tickets-1727588286069?utm\\_experiment=test\\_share\\_listing&aff=ebdsshios](https://www.eventbrite.com.au/e/rally-tasmania-officials-thank-you-tickets-1727588286069?utm_experiment=test_share_listing&aff=ebdsshios)

Then the after party from 10:30pm, information on the flyer below, see you there !!

# YOU'RE OFFICIALLY THE BEST

## OFFICIALS THANK YOU EVENT

### Dear Official

Thank you for helping make this event as safe, successful and fun as possible.

As a small gift, we'd like to invite you to our **Officials Thank You Event** on Sunday after the conclusion of the rally.

Finger food and your first drink is on us!

To official ARC After Party will kick off at 10:30pm at the Bayviews Restaurant & Lounge Bar.

### Sunday 9 November

7:00pm - 10:00pm

### Communion Brewing Co

57 Wilmot Street  
Burnie TAS

Reserve your (free) ticket

**by using the QR code**

To ensure adequate catering,  
please RSVP by Friday 31 October.

